

Go Parks: Active Schools Challenge



SCHOOL
GAMES



www.go-cv.co.uk/goparks

Go Parks: Active Schools Challenge



What is the challenge?

- ❖ As part of the overall **Go Parks 'Pilot'** - the **Go Parks: Active Schools Challenge** has been developed to encourage schools to keep their students active during the latest lockdown.
- ❖ Schools will compete against each other from 1st – 28th February, with the most active schools over the month rewarded.
- ❖ By scanning a QR code on a walk, run, scoot or cycle in a participating park, schools can earn points for each scan.
- ❖ £2,250 worth of PE/sports equipment up for grabs.
- ❖ Gives teachers the chance to set pupils homeschooling or other curricular tasks.
- ❖ Gives pupils and their families/bubbles an activity to do together in their local park.



Go Parks: Active Schools Challenge



How your school can take part

- ❖ The QR code could be on a banner or on a poster in the local park – walk, run, skip or cycle to hunt it down!
 1. *Scan the QR code.*
 2. *Open the link to complete the entry.*
 3. *Choose your school to support.*
- ❖ Encourage family members, friends and colleagues to enter – and support your school!
- ❖ Entries are unlimited for duration of the challenge - but you can only enter once a day.
- ❖ Anyone entering, must be 18 years or older – this parent, guardian or bubble member will then pledge their points to the relevant school.



Go Parks: Active Schools Challenge



Flash incentives & themed weeks

- ❖ Each scan of the QR code equates to 10 points for the chosen school.
- ❖ There will be chances to earn extra points throughout the challenge. For example:
 - ❖ It could be double points for a specific day.
 - ❖ Or even a chance to win hundreds of points at once by completing a task.
 - ❖ Keep your eyes peeled for flash activity incentives!
- ❖ Each week will also carry a fun theme – and that will form the above flash incentives.
 - ❖ Week 1: **Art** - *we want to see the best drawings of your park and what it means to you!*
 - ❖ Week 2: **English** – *who can write the most creative poem about your local park.*
 - ❖ Week 3: **Explore** – *can you answer questions about your local park and what's there?*
 - ❖ Week 4: **Maths** – *free for individual school challenges, bespoke to your pupils.*



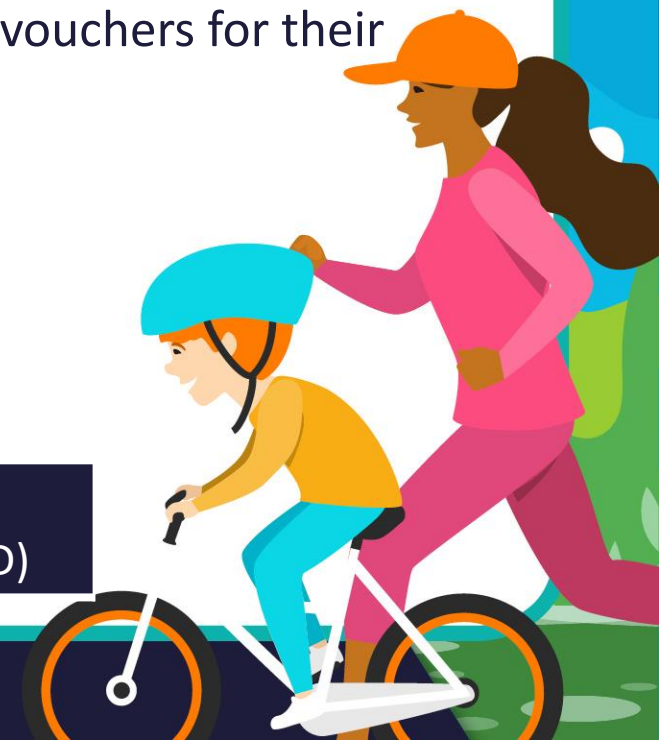
Go Parks: Active Schools Challenge



Groups & league table system

- ❖ For fairness, we have divided schools into groups, dependant on pupil numbers.
- ❖ Schools who finish in 1st, 2nd & 3rd in their group, will win PE/Sports Equipment vouchers for their school!
 - ❖ 1st: £250 voucher
 - ❖ 2nd: £150 voucher
 - ❖ 3rd: £100 voucher
- ❖ Leader boards for all groups will be shared on socials and via email regularly through challenge.

Starley (1-240 students)	Leofric (241-409 students)	Godiva (410+ students)	Whittle (Secondary)	Mercia (Micro SEND)
------------------------------------	--------------------------------------	----------------------------------	-------------------------------	-------------------------------

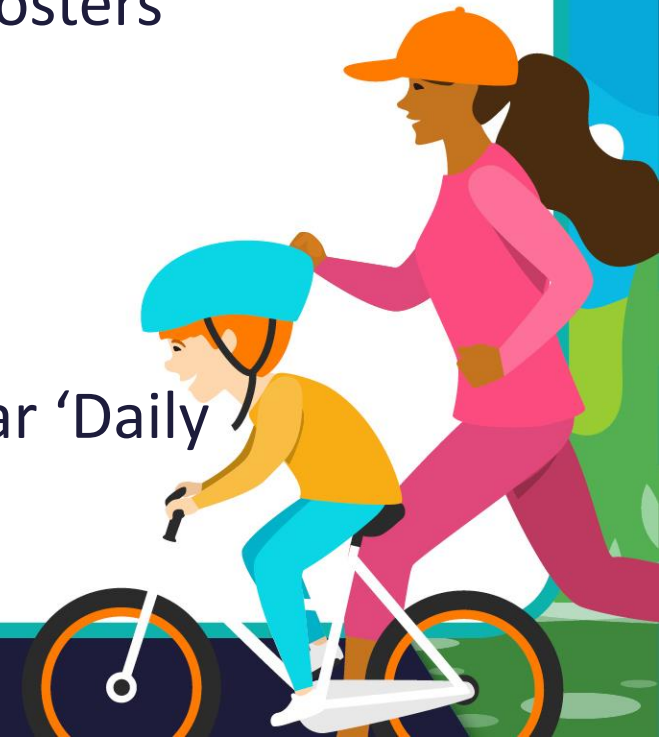


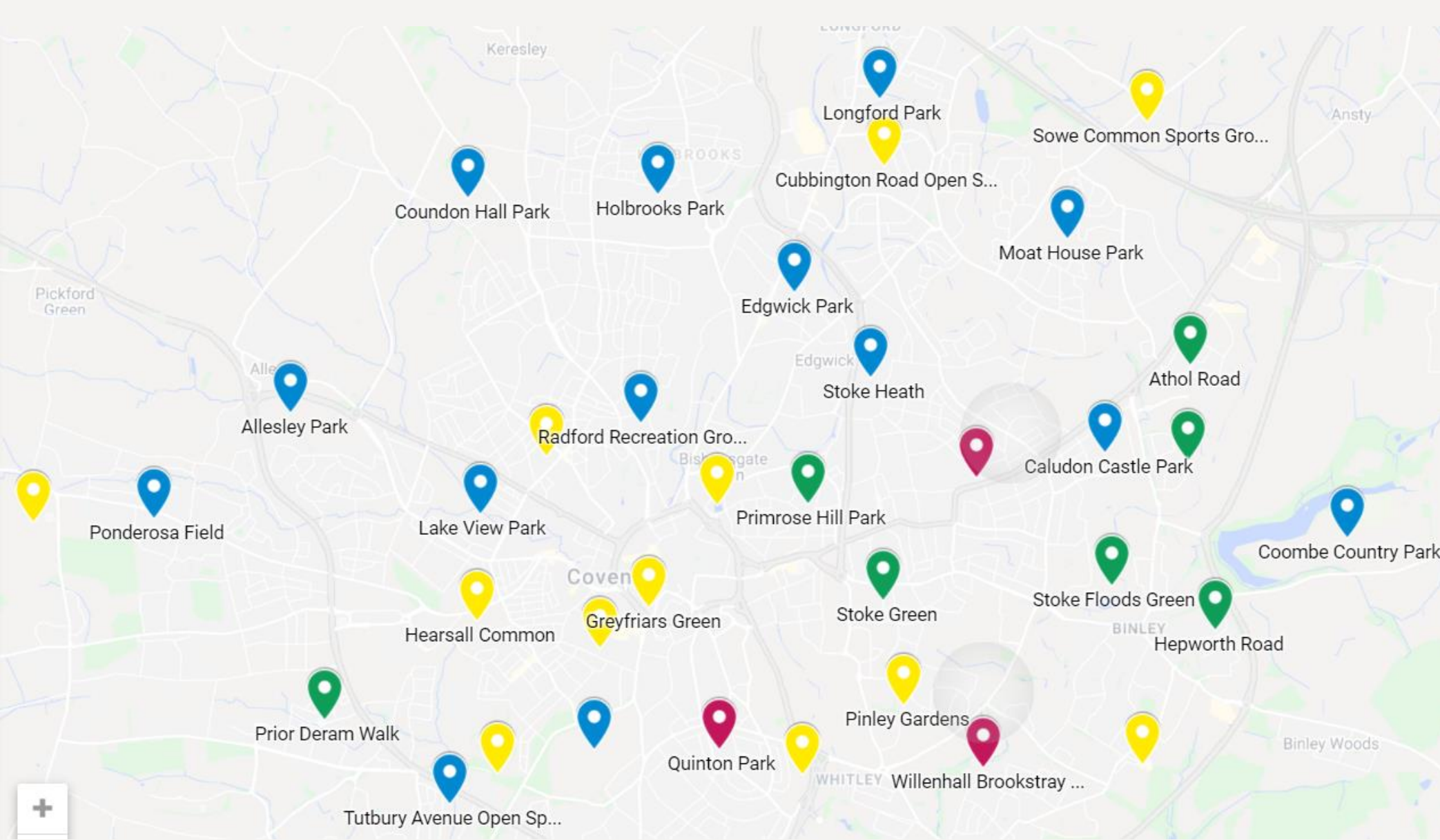
Go Parks: Active Schools Challenge



Which parks are the codes in?

- ❖ There are QR codes on a mixture of **Go Parks** banners and posters in parks/greenspaces in all areas of Coventry.
- ❖ There are 33 sites that have QR codes in place.
- ❖ We encourage everyone to **stay local**, and not to make unnecessary travel.
- ❖ You can incorporate this as part of daily exercise. The popular 'Daily Mile' campaign is back – can you combine the two!?

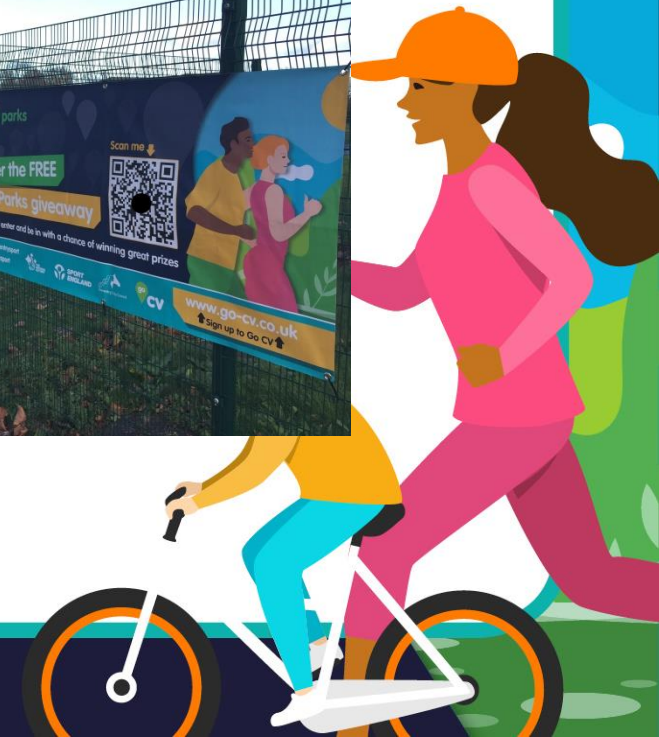




- Lake View Park
- Stoke Heath Sports Ground (Morris Common)
- Tutbury Avenue Open Space
- Allesley Park
- Jardine Crescent Sports Ground (Ponderosa)
- Coundon Hall Park
- War Memorial Park
- Moat House Park
- Holbrooks Park
- Longford Park
- Radford Recreation Ground
- Coombe Country Park
- Primrose Hill Park
- Prior Deram Park
- Caludon Castle Park
- Edgwick Park
- Gosford Park
- Hearsall Common
- Canley Ford
- Bannerbrook Park
- Moseley Avenue Park
- Spencer Park
- Sowe Common Sports Ground
- Cubbington Road Open Space
- Pinley Gardens
- Whitley Common
- Binley Rec/John White Community Centre
- Swanswell Park & Pool
- Greyfriars Green
- Willenhall Brookstray
- Quinton Park
- St. Margaret's Park
- Stoke Green
- Dorchester Way Open Space
- Athol Road
- Hepworth Road Open Space

Locations may alter very slightly - for a full interactive map of locations please visit –
www.go-cv.co.uk/goparks

Go Parks: Active Schools Challenge



Go Parks: Active Schools Challenge



Follow the journey – get social!

- **Follow us!**
 - Facebook: [@CoventrySport](#)
 - Twitter: [@CovSport](#) | [@SGOCoventryWest](#) [@SGOCoventryEast](#)
 - Instagram: [@CovSport](#)
- Use **#GoParks** and **tag us** in any related posts
- **Share and like** our posts
- **Check our channels daily** for flash challenges, leader board updates
- **Share your photos** in parks with us by commenting on our posts
- Where possible **do not post images of the QR code in direct sight** – this can be scanned without attending the park.



Go Parks: Active Schools Challenge



Being safe

- Remember - we're in national lockdown.
- We want as many people to keep active as possible and enter – but it has to be safe.
- Everyone can still enjoy the competition while still following government guidance and staying in your bubble.
- [Government guidance: Exercising](#)
- [Coventry City Council re-enforced guidance](#)

