

The Antarctic



twinkl

An illustration of an Antarctic landscape. In the foreground, there is a large, white, irregularly shaped ice formation. The middle ground shows a flat, light-colored expanse, possibly snow or ice, with some darker patches. In the background, there are rolling hills or mountains, some covered in snow and others in a darker, brownish color. The sky is a pale, light blue. The overall style is simple and illustrative.

**What do you already know
about the Antarctic?**

Polar Region

The Antarctic is a polar region, around the South Pole.

It is opposite the Arctic region, which is around the North Pole on the other side of the earth.



Antarctic Region

The Antarctic covers the continent of Antarctica and some ice shelves and islands in the Southern Ocean.



These islands include Scott Island, the South Orkney Islands, Balleny Islands, South Shetland Islands and many more!

Antarctic Region

Most of the land is covered all the time by snow and ice.

Only 1% of the land is showing!

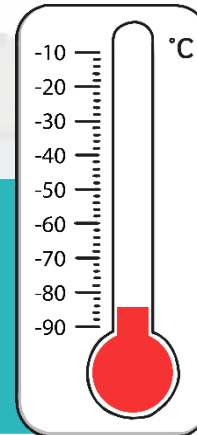
There are icebergs in the Southern Ocean.

Icebergs are pieces of ice which have broken off and are floating in the ocean.

Antarctica is the coldest continent on earth!

The world's coldest temperature ever recorded was in the Antarctic.

It reached -89.2°C in 1983!



An illustration of an Antarctic landscape featuring snow-covered mountains, a body of water with ice floes, and a penguin in the background. The scene is rendered in a soft, painterly style with a light blue sky and a pale blue sea.

**Can you think of any animals
that live in the Antarctic?**

Antarctic Animals



emperor penguin



seal

Antarctic Animals



albatross



South Georgia pipit

Antarctic Animals



Antarctic petrel



orca (killer whale)

Photo courtesy of kenaifjordsnps (@flickr.com) - granted under creative commons licence – attribution

Antarctic Animals



Antarctic icefish



Antarctic toothfish

Antarctic Animals



squid



Antarctic krill


Photo courtesy of Hans Hillewaert, By Krill666 (@wikimediacommons.com) - granted under creative commons licence – attribution

Land Animals



Belgica antarctica
(a midge without wings only 1.3cm long)

Did you know...?



Antarctica is the only continent in the world with **no** native species of ant.

What Grows in the Antarctic?

There are two types of flowering plant:

Antarctic hair grass



Antarctic pearlwort

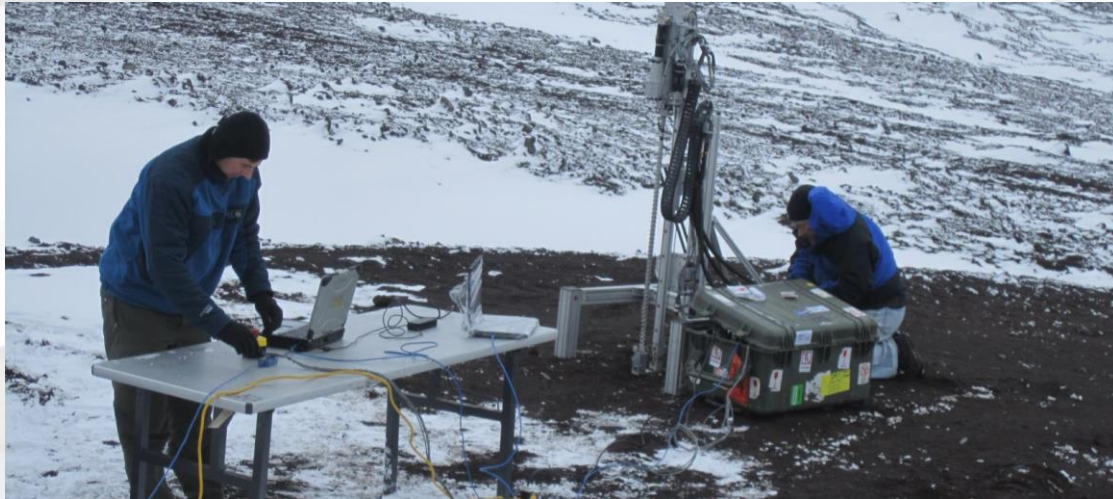


There are also types of lichens, mosses, macrofungi and liverworts.

Do People Live in the Antarctic?

No one has their permanent home in the Antarctic.

Only scientists and other people working at research stations stay there.



There are icebergs in the Southern Ocean.

Icebergs are pieces of ice which have broken off and are floating in the ocean.

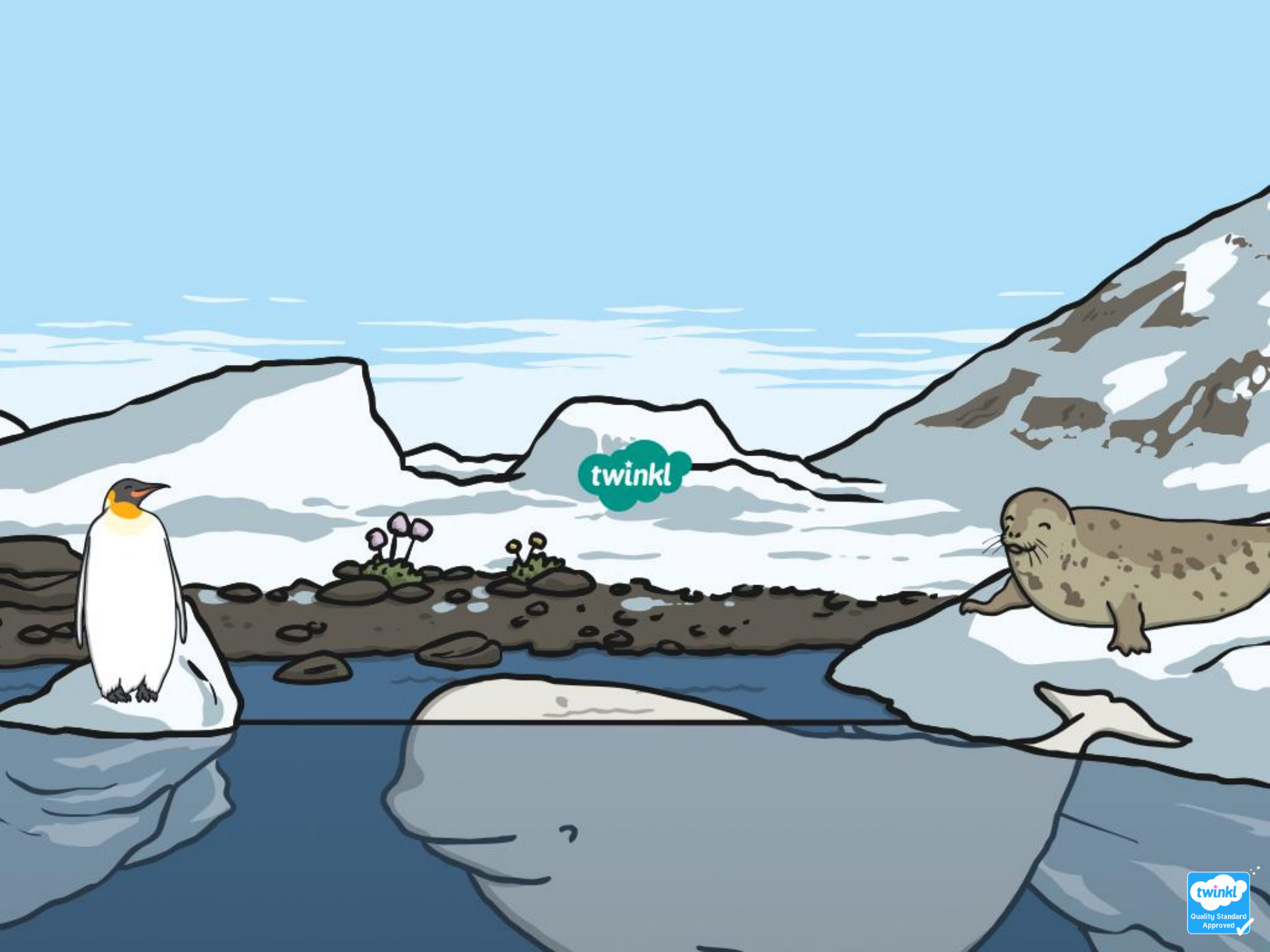
What Do Scientists Do There?

Scientists work in Antarctica to discover new things, measure and test the ice, monitor the effects of global warming, research light, study animals and lots more.



**Would you like to visit
the Antarctic?**





twinkl