



History

The Great Fire of London

London Past and Present

twinkl

Aim

- I can find out some of the ways in which London has changed.

Success Criteria

- I can talk about how the buildings in London were different in the past.
- I can talk about how people travelled differently in London in the past.
- I can compare past and present London to say what things are different and similar.



Whole Class



Can we create our own timeline?

A timeline for the days of the week



A timeline of years



Present Day London



Lets look at the following images of modern London.

What do you know about London already?
What can you see?

Can you discuss:

- Houses and buildings
- London at night
- Roads
- Transport
- People and jobs
- Anything else you think is interesting!



What does this tell you about London today?
How is it the same/different to where you live?



Photo courtesy of Eric Fischer (@flickr.com) - - granted under creative commons licence - attribution

LONDON



Photo courtesy of Pierre Metivier(@flickr.com) - - granted under creative commons licence - attribution

LONDON



Photo courtesy of Eric Fischer (@flickr.com) - - granted under creative commons licence - attribution

LONDON



Photo courtesy of Dmitry B (@flickr.com) - - granted under creative commons licence - attribution



Photo courtesy of Yortw(@flickr.com) - granted under creative commons licence - attribution



Photo courtesy of mattwils0n(@flickr) - - granted under creative commons licence - attribution



Photo courtesy of Brian Rosner (@flickr.com) - - granted under creative commons licence - attribution



Photo courtesy of Michiel Jelijts@flickr.com - - granted under creative commons licence - attribution

LONDON

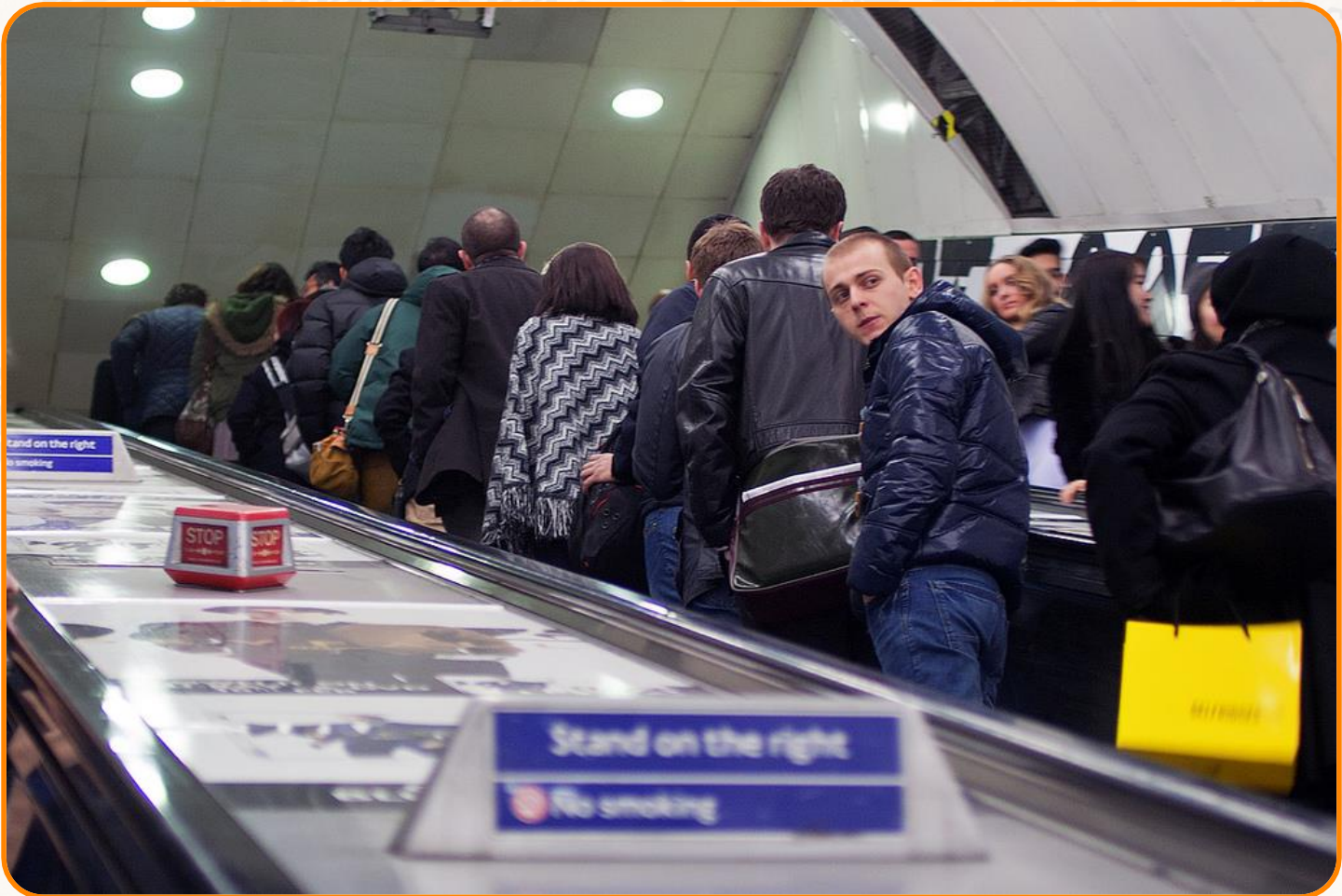


Photo courtesy of Lena Vasiljeva@flickr.com) -- granted under creative commons licence - attribution

LONDON



Photo courtesy of Lena Vasiljeva@flickr.com) -- granted under creative commons licence - attribution

How was London different in the past?

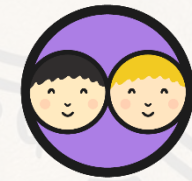


We are about to go back in time by around 350 years to visit London in the year 1666. This was a very important year in the history of London. In pairs, discuss your ideas about how London might have been different at that time.

Discuss these topics:

- Houses and buildings; what might these have been built from?
- People; what might they have worn?
- Transport; how would people in London have travelled around?
- Roads and streets at night; what might they have looked like?

Now it's time to draw these ideas!



London in the Past

1666

Share and compare your ideas

Let's look at the following images of London from the 17th Century.
How do they compare to your own ideas?

- Why don't we have photos of London in 1666?
- What can we use to find out what London was like then?



This is a 17th Century map of London- can you see the River Thames?



Photo courtesy of Felix Obholzer(@flickr.com) - - granted under creative commons licence - attribution

This is a painting of the Thames, London in the 17th Century



Photo courtesy of [Duncan](@flickr.com) - granted under creative commons licence - attribution

This is a drawing of St Pauls Cathedral (pre 1666)



Photo courtesy of Ben Sutherland@flickr.com - - granted under creative commons licence - attribution



This is a painting of Samuel Pepys (1633 – 1703).

He was a Member of Parliament and lived in London. He kept a very detailed diary from 1660 – 1669 and this diary became one of the most important sources of information about London during this time in history.

Photo courtesy of Robert Hoffstutter(@flickr.com) - - granted under creative commons licence - attribution

This is an artistic impression of the view of 17th Century London with the present day view in the distance.



Photo courtesy of Alexander Boden@flickr.com) - - granted under creative commons licence - attribution

Aim



- I can find out some of the ways in which London has changed.

Success Criteria

- I can talk about how the buildings in London were different in the past.
- I can talk about how people travelled differently in London in the past.
- I can compare past and present London to say what things are different and similar.

LONDON

