

A REVISION OF THE FAIRY TALE BY
HANS CHRISTIAN ANDERSEN

Week 2 – Live Lessons



The
Snow Queen

ILLUSTRATED BY BAGRAM BABATOULINE

Week 2 - Spellings

Mrs Bardell's Group

Suffixes - er,ed,ing

1. Gardener
2. Gardening
3. Limited
4. Limiting
5. Offered
6. Offering
7. Benefitted
8. Benefitting
9. Focussed
10. Focussing

Miss Wood's Group

Suffix – ing

1. Copying
2. Crying
3. Replying
4. Marrying
5. Carrying
6. Flying
7. Trying
8. Drying
9. Skiing
10. Taxiing

Recap skills

Prepositional sentences

(in, on, under, beside, above, behind, below etc)

The book was **on** the table.

Put your scarf **in** your bag.

The keys are **next to** the tea cups.

Write 2 sentences with 2 different prepositional words.

Recap skills

Skills work – 2 adjective sentence. Remember the comma between the adjectives.

The **large, panting** dog.

The **soft, luxurious** cover.

The **pretty, delicate** flowers.

The **old, rusty** key.



Monday 18th January 2021

Fronted adverbial phrases

How (manner) – quite often ly adverbs

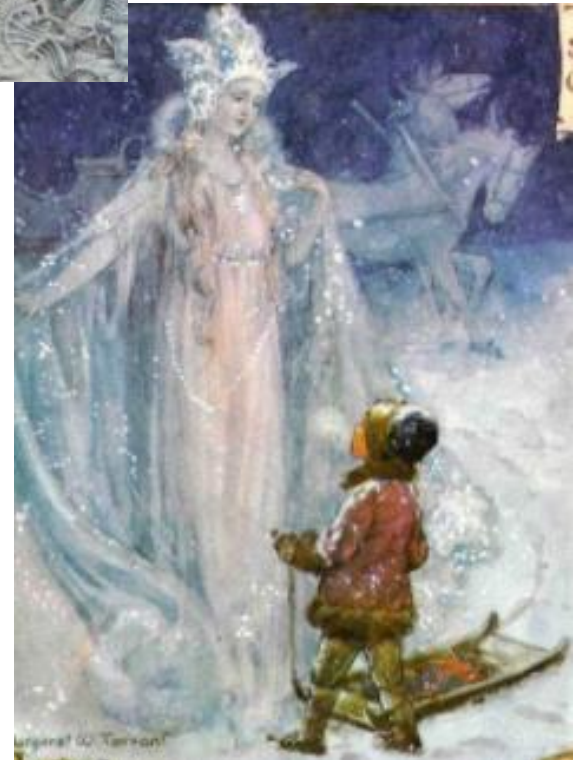
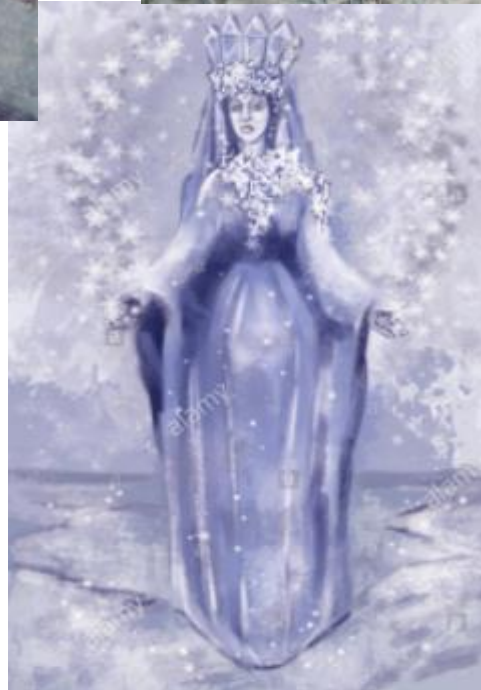
Cautiously, he peered through the frosted glass of his bedroom window.

When (time) adverbial

Later that night, when Gerda had come home to bed, Kay stayed by the window gazing at the falling snow.

Where (place) adverbial

From the window in his bedroom, Kay stared, mesmerised by the beauty of the falling snowflakes.



The Snow Queen

flew around outside.

“The white bees are swarming,” Grandmother said.

“Do they have a queen too?” asked Kai, because he knew that the real bees had a queen.

“They do!” said the old woman. “She flies just where they swarm the thickest. She’s the biggest bee of all and she never rests on the ground, she just flies up again in a black cloud. Night after night, she flies through the winter streets of the city and peers into people’s windows. And then the windows frost up with strange and curious patterns – just like flowers.”

“Yes, we’ve seen them!” the children both exclaimed. And they knew then that Grandmother was telling the truth.

“Can the Snow Queen come in here?” asked Gerda.

“Just let her try,” Kai said. “I’ll set her on the hot stove, and then she’ll melt.”

But Grandmother said nothing. She just smoothed back the boy’s hair and told other stories.



Second Story

Back home that evening, when Kai was half undressed, he crawled up on the chair by the window and peered out of the tiny hole. A few snowflakes fell outside, and the largest of them hung on the edge of one flowerbox. The snowflake grew bigger and bigger, till at last it became an entire woman. She was clothed in the finest white gauze, which looked like it had been made from millions of starry flakes. She was exquisite but she was ice – dazzling, flashing ice – even though she was alive. Her eyes shone like two bright stars, but there was no peace or rest in them. She nodded toward the window and motioned with her hand. The boy became frightened and jumped off his chair; it was as if a giant bird had flown past the window outside.

The next day there came a clear frost – and then

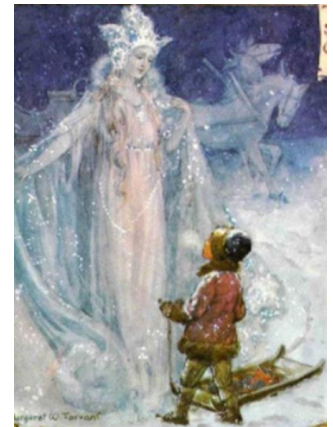


What does the Snow Queen do?

- Grandma said the snow flakes are white bees and she's the Queen bee.
- Flies through the winter nights
- Never rests
- Peers into people's windows
- Creates frosty flowers on the windows
- **Transfixes** people with her cold icy stare

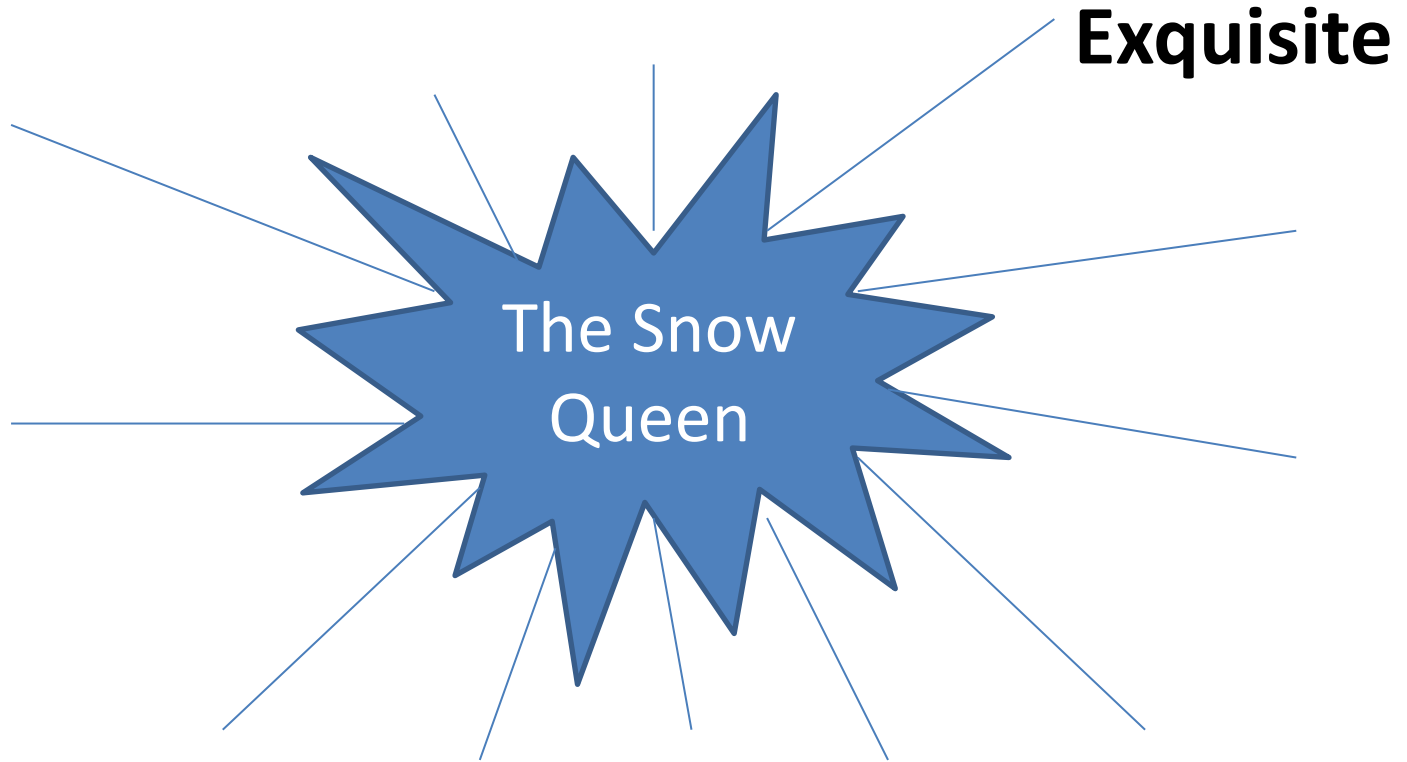
Description of the Snow Queen

- Started as a snow flake
 - Got bigger and bigger until she became like a woman.
 - Dress of the finest white silk
 - Dress looked like it was made from a million sparkly snowflakes
 - **Exquisite** – means lovely or beautiful
 - **Transfixing** – couldn't take your eyes off her
 - Dazzling, flashy, icy body
 - Eyes shone like two bright stars
 - No love in her eyes only coldness
 - **Transparent** hand – transparent means see through
- Beckoned Kay with her long elegant finger



Activity 1- Description of the snow Queen spider chart

Complete the spider chart to describe the Snow Queen



Activity 2 – Sentence writing

Pick 5 words from your spider chart about the Snow Queen use those words in super sentences.
(Try to include 2 adjective skill, fronted adverbials and conjunctions in your sentences)

Example

1. Delicate finger

Coldly, the Snow Queen beckoned Kay with her **long, delicate, icy** finger.

2. Heart of ice

If the Snow Queen were kind, her heart would not be of ice.

A REVISION OF THE FAIRY TALE BY
HANS CHRISTIAN ANDERSEN



The
Snow Queen

ILLUSTRATED BY BAGRAM IBA TOULINE