

A REVISION OF THE FAIRY TALE BY
HANS CHRISTIAN ANDERSEN



The
Snow Queen

ILLUSTRATED BY BAGRAM IBA TOULINE

Skills work 1

Fronted adverbials – Context - The Snow Queen

How (manner)

e.g. **Sneakily**, Kay and Gerda made spy holes on the window with their coins.

When (time)

In the summer, Kay and Gerda would admire their beautiful roses.

Where (place)

By the fire, Kay and Gerda snuggled in their blankets.

Skills Work - 2

Questions:

What time is it?

Why is it so cold?

Will you be my friend?

How do you do that?

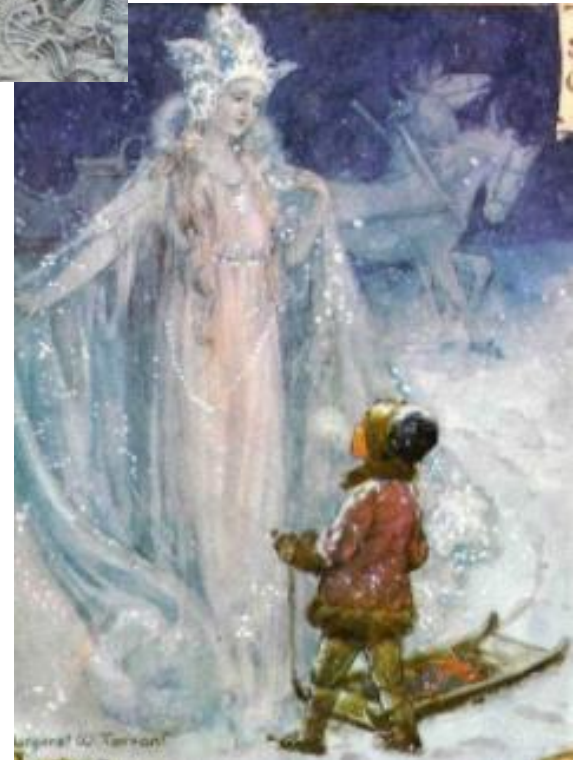
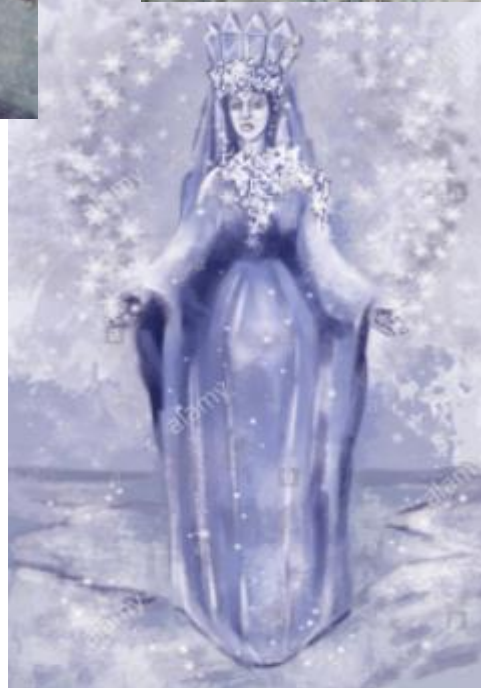


Skills Work 3 - Subordinating conjunctions

Start your sentence with the following subordinating conjunctions:

- If
- When
- Because
- Before
- After

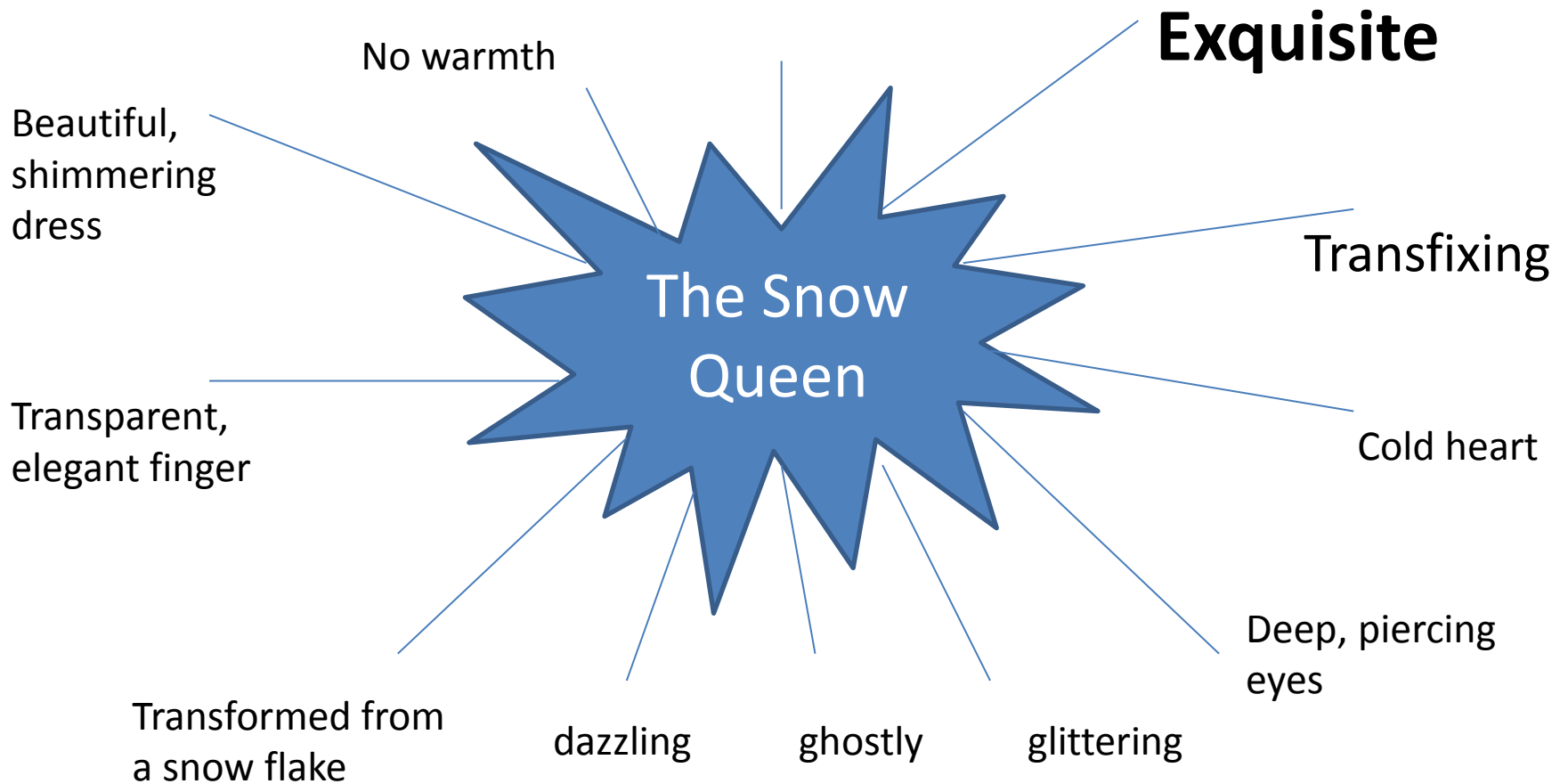




The Snow Queen

Activity 1- Description of the snow Queen spider chart

Complete the spider chart to describe the Snow Queen



Activity - The Snowflakes

Tonight, Gerda came over and we watched the beautiful, delicate, snow covering the street like a silky blanket. We even used our old, bronze coins to create spy holes on the cold, frosty window so we could sneak a glance at the people outside. Because she was tired, Gerda went back home early but I wanted to stay up watch the delicate, shimmering snow flakes falling faster and thicker than ever.

Suddenly, my eyes became fixed on the most beautiful snowflake. It was falling very differently than all the others, almost as if it had a special job to do. **Dancing elegantly**, it floated outside my window. **From the kitchen window**, it looked like a ballet dancer **gracefully**, twirling and leaping. **Curiously**, I rubbed my eyes. **Was the flake getting bigger? Was I dreaming?**

Slowly, the **shimmering, frosty** snowflake began to take the shape of a human body. When I rubbed my eyes again the shape had **transformed** into the most **spectacular, shimmering** white gown, covered with **glittering, frosty** crystals.

My eyes were **transfixed**. I saw two, **icy, blue** eyes staring back at me. I could feel them draining all the warmth from me. **Elegantly**, a **soft, transparent** arm appeared and stretched out a **long, delicate** finger **beckoning** me closer.

Slowly, holding my breath, I moved closer to the frozen window and stared. **Just then**, my grandma called me. I broke my gaze. When I looked back she was gone! *Was it her? Was it really the Snow Queen from grandma's stories?* An **icy, eerie shiver** ran down my spine and the hairs on my neck stood on end.

I must tell Gerda tomorrow. We must be careful. She may be about!

Kay

Tuesday 19th January 2021

L.O – I can show a characters feelings

Context – The Snowflakes

Box 1 – Tonight Gerda came over (Cuddled in blanket, hot chocolate, coins on window, Gerda went home)

Box 2 – Eyes fixed on a snowflake (describe it, what it looked like, what it did) use a 2 question skill.

Box 3 – Snow flake takes the shape of human (describe gown, eyes, body and finger beckoning)

Box 4 – Hold breath frozen with fear. (2 question skill, how did you feel?)

A REVISION OF THE FAIRY TALE BY
HANS CHRISTIAN ANDERSEN



The
Snow Queen

ILLUSTRATED BY BAGRAM IBA TOULINE