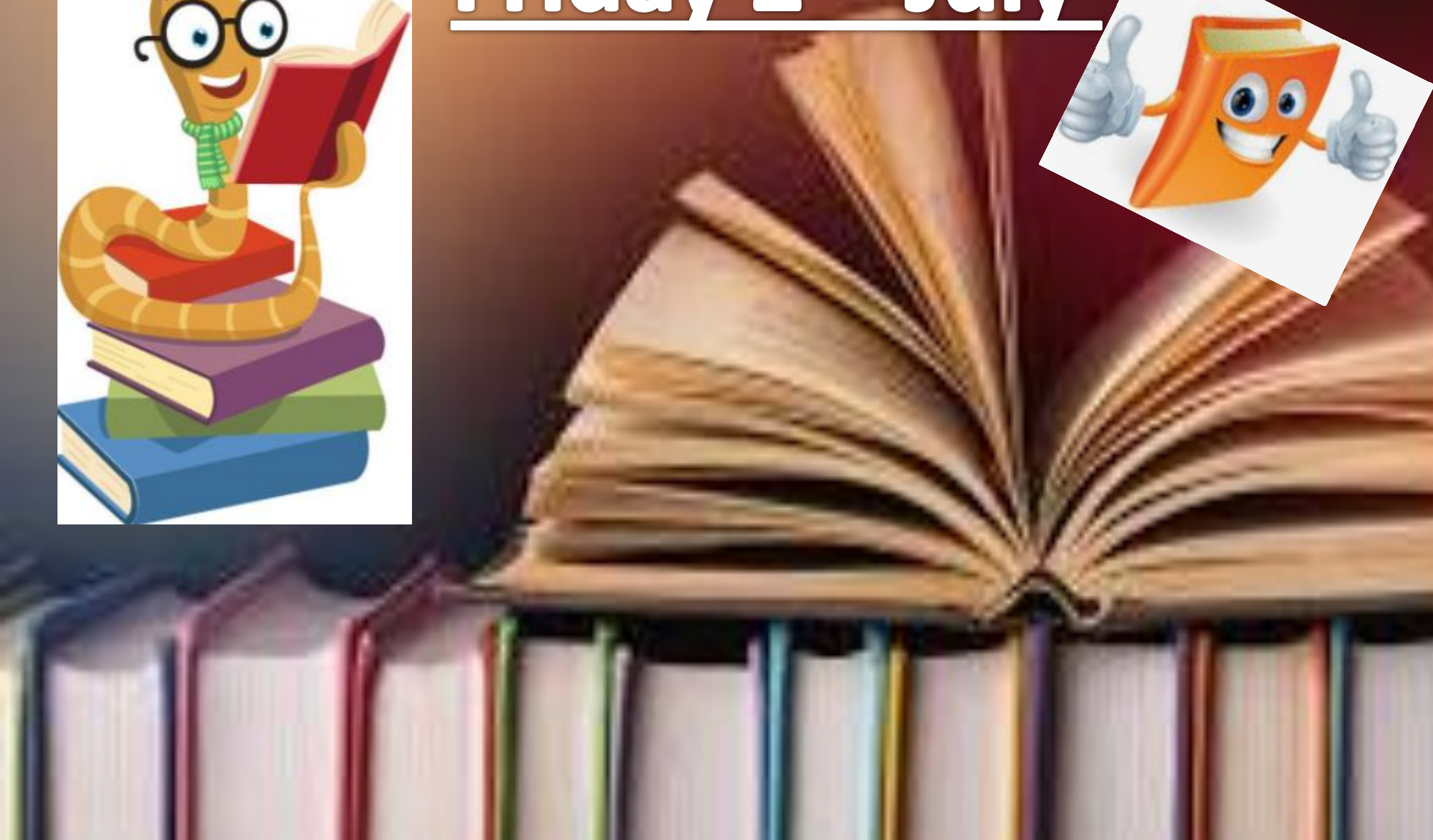
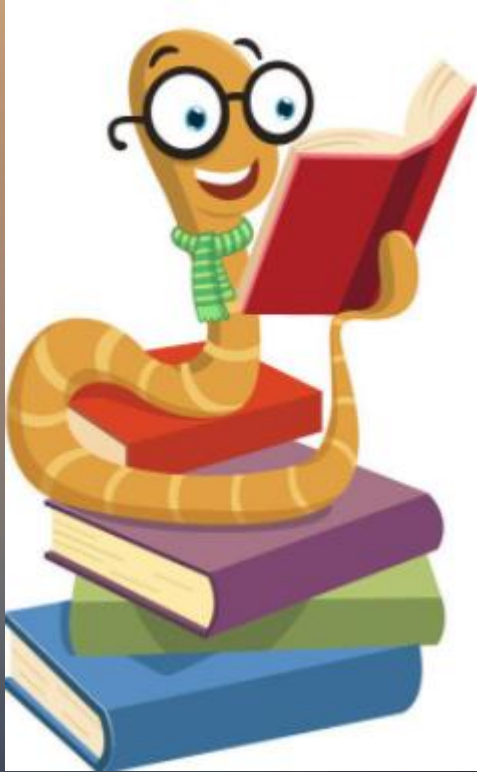


# Big Read – Friday 2<sup>nd</sup> July



Read the text carefully then answer the following questions

# Recycle, Recycle

*Making Whitby a cleaner, greener place to live!*

Can you help us reach our target of recycling **35%** of our town's waste?

We are sure you can. Last month we recycled **27%** so we haven't got too far to go.

Weekly collections of Black Boxes from outside your home.

Please use plastic bags to separate different types of rubbish.



**Paper**



**Glass**



**Tins**



**Clothing**



**Plastic**



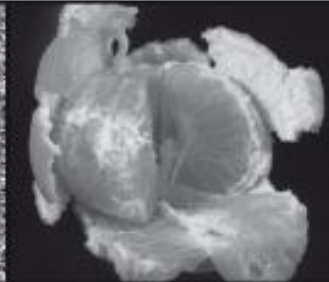
Batteries should be left beside the Black Box in a carefully sealed bag.

*Green Waste Services* – Weekly collections on Saturday.  
Unless you are disabled, please leave your green wheelie bin  
at the end of your path or driveway.

All green waste should be placed in your green wheelie bin and **NOT** in plastic bags.



**Weeds and Grass  
Cuttings**



**Vegetables  
and Fruit  
Peel**



**Egg Shells**

**To order a Black Box call 01947 820227.**

If you need any more information about recycling in Whitby, you can email us at  
'[recycling@whitby.gov.uk](mailto:recycling@whitby.gov.uk)' or check out our website at '[www.whitby.gov.uk](http://www.whitby.gov.uk)'.



*Remember, every little helps.  
Thank you, Whitby Council*



# Comprehension - Recycle, Recycle

Read the text carefully then answer the following questions

1. In line two, is Whitby council asking or telling us to recycle?
2. Are the people of Whitby recycling at the moment?
3. How many different plastic bags might you need to put your rubbish in?
4. Why do you think the council wants you to separate your rubbish?
5. Do all rubbish items go into the black box?
6. Will the council help disabled people put their rubbish out?
7. Why do you think they might need help with this?
8. Can you use technology to find out more about recycling?
9. Why do you think the word recycle is written twice in the title?
10. Why do you think the council says thank you at the end of the leaflet



# Extension Activity

- Do you agree or disagree that 'every little helps' when it comes to recycling? Explain why. (2marks)
- Do you think it is good or bad to have a target to reach? Explain why. (2 marks)
- How could we recycle more as a school? (3 marks)

