

A stylized illustration of a massive tsunami wave crashing over a city skyline. The wave is depicted with vibrant teal and blue colors, with white foam at the crest. The city below features various skyscrapers and buildings in shades of blue and brown. A bridge spans across the water in the foreground, and a marina with several boats is visible on the right. The sky is a clear, bright blue. The overall style is that of a colorful, cartoonish illustration.

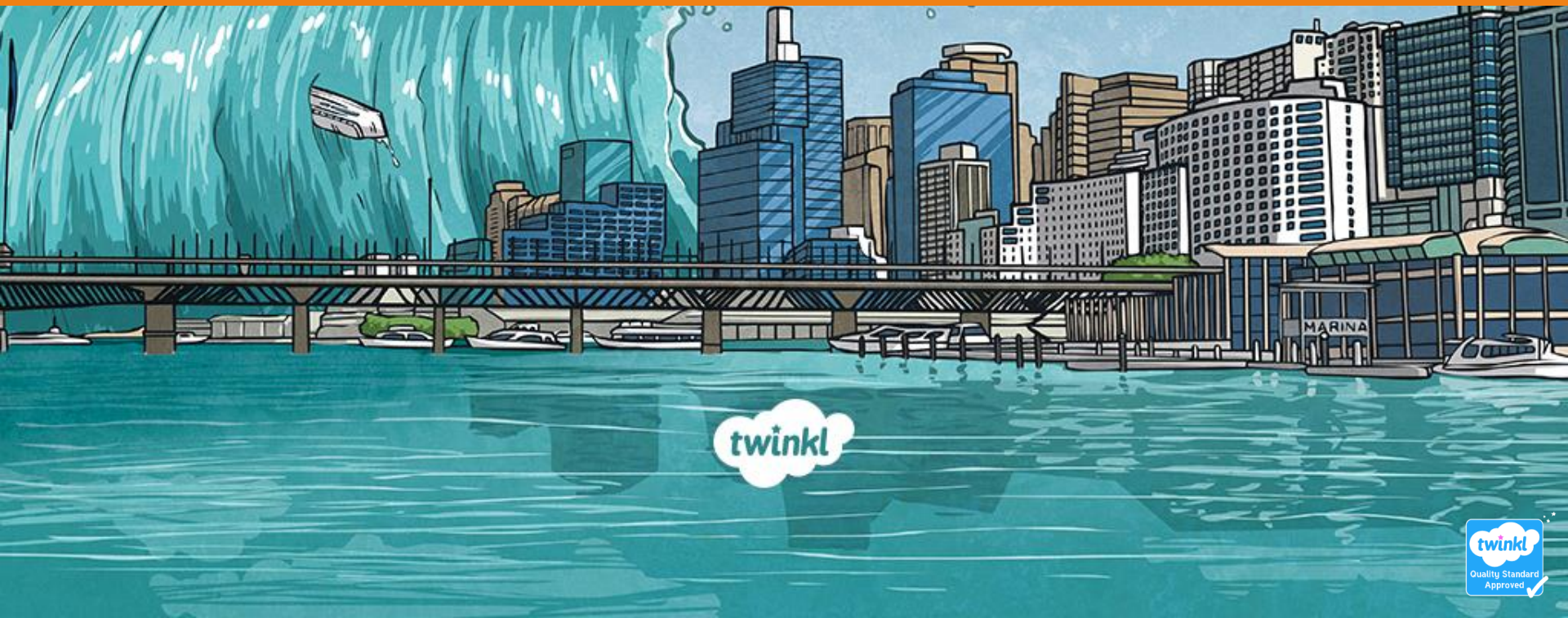
Tsunamis

Extreme Earth

twinkl

Monday 1st February 2021

LO: I can explain what causes tsunamis
and how they affect people.



What Is a Tsunami?



What do you think a tsunami is?



Tsunami is a Japanese word.

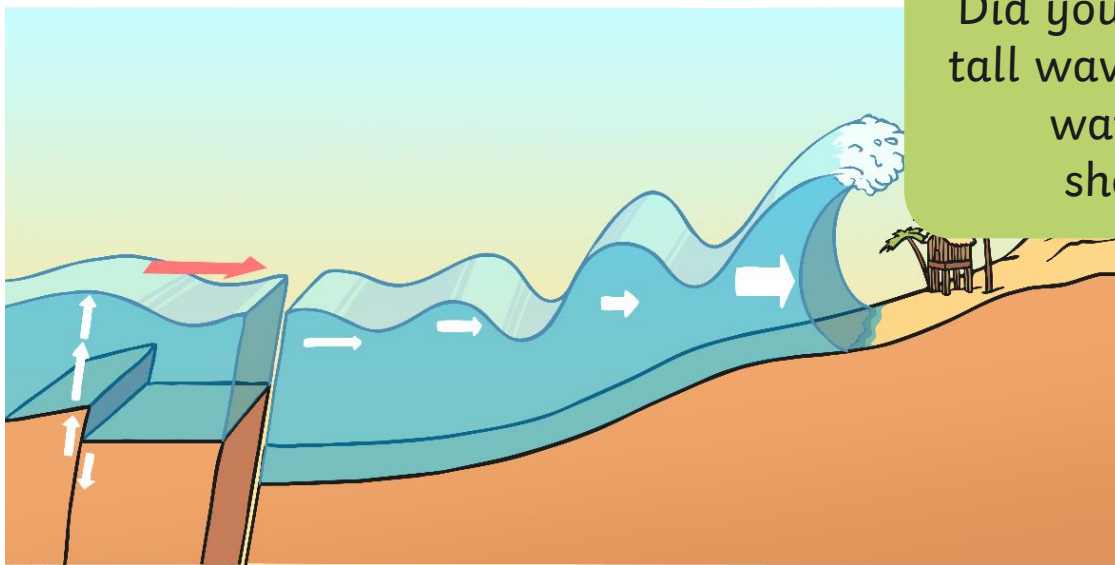
It means 'Harbour Wave'.

A tsunami is a giant wave.

Was your idea close to the real meaning?

What Causes a Tsunami?

- A tsunami is a giant wave caused by a huge earthquake under the ocean.
- The earthquake causes a large amount of water to be displaced very quickly.
- A series of waves travels through the deep water.
- As the waves travel through shallower water near the land, they get bigger.



Did you know... before the tall wave hits the land, the water level at the shore will drop?



What do you notice?



What do you notice?



What do you notice?



What Damage Does a Tsunami Cause?



Tell me what you noticed about the pictures.

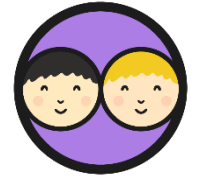
Are there things the same in all of the pictures?

What differences are there?

What help would people affected need now and in the future?



What Damage Does a Tsunami Cause?



What can you see that looks out of place?

What kinds of damage have occurred in the area?

If you were in a rescue team who have just arrived at the scene, what kinds of help might you need to give?



TSUNAMI HAZARD ZONE



**IN CASE OF EARTHQUAKE GO
TO HIGH GROUND OR INLAND**

Tsunami Safety Rules



Approaching tsunamis are sometimes predicted by a sudden rise or fall of coastal waters and are usually accompanied by a loud roar that sounds like a train or aircraft. If you notice these, move inland to high ground straight away.

Stay out of danger until an "ALL CLEAR" is issued by the emergency services.

Homes and other buildings located in low lying coastal areas are not safe. Do NOT stay in such buildings if there is a tsunami warning.

The upper floors of high, multi-story, reinforced concrete hotels can provide safety if there is no time to quickly move inland or to higher ground.

Never go down to the beach to watch for a tsunami! A small tsunami at one beach can be a giant a few miles away.

Stay tuned to your local radio or television stations during a tsunami emergency.





twinkl

MARINA