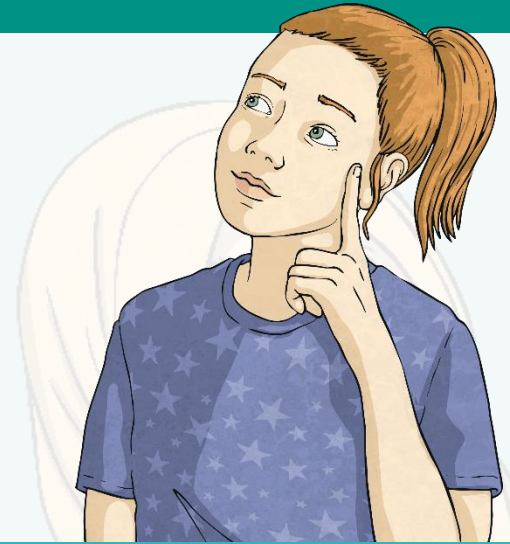


Words with a Long /e/ Sound Spelt 'ie' or 'ei' after 'c' (And Exceptions)



We are looking again at this well-known spelling rule...

'i' before 'e'
except after 'c'!



This rule usually applies to words with a 'c' before a long /e/ sound, e.g.

conceive

With your partner, how many words can you find with an 'ei' letter pattern that makes a long /e/ sound?

Did you find any of your spelling words?

deceive

conceive

receive

perceive

ceiling

receipt

protein

caffeine

seize

neither

What do you notice about the highlighted words?

There are a few words in the English language that do have an 'e before an i' to make a long /e/ sound, where it is not preceded by a 'c'.

We call these the exceptions to the rule and you just need to learn them.



Help Mr Whoops to choose the correct spelling to complete these sentences:

I need to find the **receipt**/reciept for my new top because it has a hole in it meaning I have to return it to the shop.

My birthday balloons were full of helium so they all floated up to the cieling/**ceiling** where I couldn't reach them.

A balanced diet must contain fruit and vegetables, carbohydrates, **protein**/protien, fibre and dairy produce.



Here are this week's spellings to practise.

deceive

conceive

receive

perceive

ceiling

receipt

protein

caffeine

seize

neither



twinkl

