



# Year 2 Christmas

## English Activity Booklet

Name:

\_\_\_\_\_



twinkl

# 'Twas the Night Before Christmas

Read the poem 'Twas the Night Before Christmas and answer the questions.

'Twas the night before Christmas, when all through the house,  
Not a creature was stirring, not even a mouse.  
The stockings were hung by the chimney with care,  
In hopes that St. Nicholas soon would be there.



The children were nestled all snug in their beds,  
While visions of sugar-plums danced in their heads.  
And mamma in her 'kerchief, and I in my cap,  
Had just settled our brains for a long winter's nap.

When out on the lawn there arose such a clatter,  
I sprang from the bed to see what was the matter.  
Away to the window I flew like a flash,  
Tore open the shutters and threw up the sash.

The moon on the breast of the new-fallen snow,  
Gave the lustre of mid-day to objects below.  
When what to my wondering eyes will appear,  
But a miniature sleigh and eight tiny reindeer.



# 'Twas the Night Before Christmas

With a little old driver, so lively and quick,  
I knew in a moment it must be St. Nick.  
More rapid than eagles his coursers they came,  
And he whistled, and shouted, and called them by name!



1. What are the children in the poem dreaming of?  
Tick one.

spicy pears       fruit cake

sugar plums       salty apples



2. Find and copy four pairs of words in the poem  
that rhyme.

\_\_\_\_\_ and \_\_\_\_\_      \_\_\_\_\_ and \_\_\_\_\_  
\_\_\_\_\_ and \_\_\_\_\_      \_\_\_\_\_ and \_\_\_\_\_

3. Who do you think St. Nicholas is? Do you know  
another name for him?

\_\_\_\_\_

## 'Twas the Night Before Christmas

4. Why do you think the author has described going to the window as 'I flew with a flash'?

---

5. What is your favourite phrase or description in the poem? Why?

---

---

6. The next verse of the poem describes what St Nicholas says to the reindeer. What do you think he will say to them?

**"Now, Dasher! Now, Dancer! Now, Prancer and Vixen!**

---

!

---

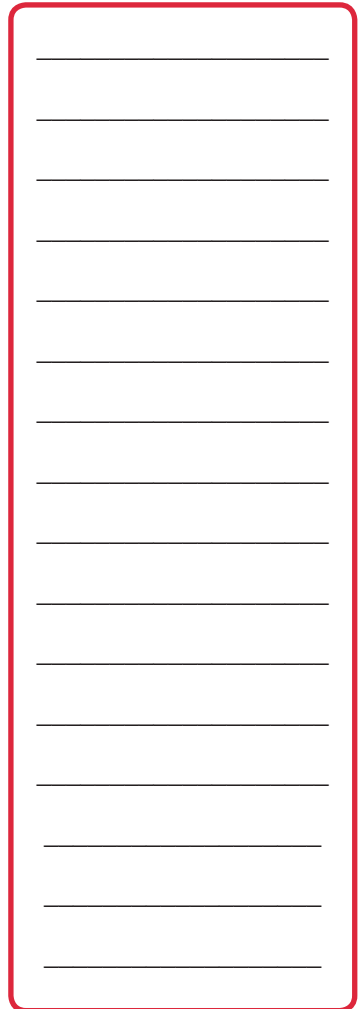
!

**Now Dash away! Dash away! Dash away all!"**

# Christmassy Common Exception Words

Can you read this text and spot the **common exception words** that have been spelt **incorrectly**? Write the correct spellings in the box in the order the words come in the text.

I was so happy that it was Kristmuss eve at last! Every shild was tucked up in their bed, waiting for Farther Crimas to come and leave them presents. Some chilrun hoped for munee, some hoped for smart new clowves, and some hoped for toys. I klimed the stairs to bed as farst as I cood. My pairunts couldn't believe it because I usually cry when it's time to have my barf and go to sleep. I couldn't wait another our for Crissmiss day. As my faver closed my bedroom dor I closed my eyes tight and wished I wood fall asleep soon!



# Christmassy Common Exception Words

Write your own sentences using as many of the correctly spelt common exception words as you can.

---

---

---

---

---

---



# Suffix Snap

Can you draw lines to put these crackers back together? Match up the root word with its suffix to make a new word. One has been done for you.

The image shows two columns of cracker-shaped boxes. The left column contains root words: quiet, cheer, kind, love, thought, care, amaze, pain, and quick. The right column contains suffixes: -ful, -less, -ness, -ful, -less, -ness, -ly, -ment, and -ly. A green line connects the 'quiet' cracker to the '-ness' cracker in the right column.

quiet	-ful
cheer	-less
kind	-ness
love	-ful
thought	-less
care	-ness
amaze	-ly
pain	-ment
quick	-ly

# Christmas Trees

Read the information text about Christmas trees below and answer the questions.

## Decorating at Christmas

Christmas trees are usually decorated for Christmas Day. Many people use baubles, lights, tinsel, angels and stars on their trees, and might have a colour theme. Christmas presents are usually put under the tree.

## Different Types of Trees

Christmas trees come in different shapes and sizes. Many people choose real trees to decorate because they can have a woodland smell. Others choose fake trees because they make less mess. There are pink, black, musical and even spinning trees!





# Christmas Trees

## Where Else Do You Find Christmas Trees?

Many villages, towns and cities have a bigger Christmas tree with lights, for people to enjoy outside.

### Christmassy Facts!

- The famous London Christmas tree in Trafalgar Square is a gift from Norway each year.
- The world's largest floating Christmas tree is in Brazil.
- Prince Albert started the Christmas tree tradition in England.



# Christmas Trees

1. Which one of these things do people **not** usually decorate their trees with? Tick one.

baubles

fish

lights

tinsel

2. What kind of special tree does Brazil have?

---

3. Who started the Christmas tradition in England?

---

4. Where does the famous London Christmas tree in Trafalgar Square come from? Tick one.

Iceland

France

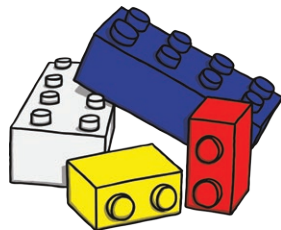
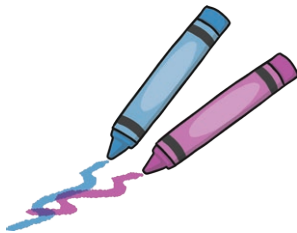
Germany

Norway



# Christmas Lists

Can you write some lists for Santa of what you would like for Christmas? Choose **three** toys from the toy catalogue below for each list. Remember to use **commas** and the word '**and**' correctly in your lists. One has been done for you.



# Christmas Lists

Dear Santa,

Please can you bring me **a scooter, crayons and some books?**

Dear Santa,

Please can you bring me

\_\_\_\_\_?

Dear Santa,

Please can you bring me

\_\_\_\_\_?

Dear Santa,

Please can you bring me

\_\_\_\_\_?

Dear Santa,

Please can you bring me

\_\_\_\_\_?

# Holiday Homophones

Can you complete these festive sentences by choosing the correct homophones?

1. I wish I could live \_\_\_\_\_ (here/hear), in the North Pole!

2. We love to visit my grandparents at Christmas because \_\_\_\_\_ (there/their/they're) turkey is the best!

3. I hope I find a teddy \_\_\_\_\_ (bare/bear) in my stocking.

4. I can't wait to open \_\_\_\_\_ (one/won) of the windows on my advent calendar when I get home.

5. We don't get much \_\_\_\_\_ (sun/son) in the sky around Christmas time.



## Holiday Homophones

6. I asked Father Christmas for \_\_\_\_\_ (to/too/two) roller skates for Christmas.
7. The elves must \_\_\_\_\_ (be/bee) busy in their workshop this time of year.
8. The snow fell and the wind \_\_\_\_\_ (blew/blue) hard.
9. 'Twas the \_\_\_\_\_ (night/knight) before Christmas...
10. They had to be very \_\_\_\_\_ (quite/quiet) so Father Christmas wouldn't \_\_\_\_\_ (here/hear) them.



# The Mischievous Elf

Read the story of The Mischievous Elf and answer the questions.

Most elves are good and work hard. They spend most of the year getting presents ready for Christmas. However, there was one elf who was different. Ernie the elf loved to play and to make himself laugh.

Ernie looked like a normal elf; he had small hands and feet, as well as big ears. He wore a green suit with a large hat. The hat had a golden ball on the end, that he loved to shake. It made a lovely gentle noise. He had a great smile whenever he played a trick on someone.

He was a mischievous elf who was always looking for new ways to make everyone giggle.

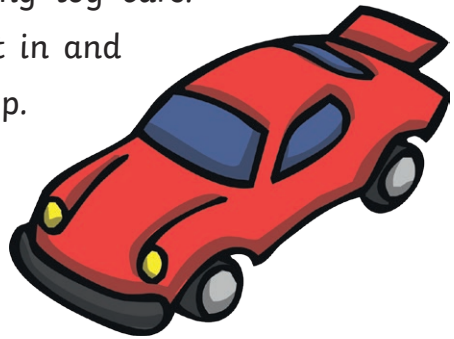




# The Mischievous Elf

He liked to make snowmen. One day, he made a really large snowman and dressed it in Santa's smooth, red suit. Everyone thought it was Santa. Mrs Claus even gave the snowman a big hug and a kiss before she worked out what had happened.

Ernie was also good at making toy cars. He made one that he could fit in and raced it around Santa's workshop. He even gave Rudolph a race to see who was faster. But Rudolph was so fast, he had no chance of beating him.



One year, he hid all of the colourful wrapping paper and the elves had to use newspaper instead!

Everyone loves his tricks and jokes, and they look forward to what he is going to do next!

# The Mischievous Elf

1. Which of these statements are true and which are false? Tick true or false for each sentence.

Ernie had small hands and feet.  true  false

He wore a red suit.  true  false

He was a helpful elf who never made mischief.  true  false

Ernie was terrible at making cars.  true  false

Everyone loves his tricks and jokes!  true  false

2. What does the word **mischievous** mean? Can you think of another word that means the same thing?

---

---

---

## The Mischievous Elf

3. Do you think everyone thought the snowman was Santa?

---

---

4. Draw a picture of Ernie using the description in the text.





# Elves Expanded Noun Phrases

How many expanded noun phrases can you think of to describe what you can see in Santa's Workshop? Remember to use at least two adjectives. One has been done for you.



The busy, hard-working elves

---

# Elves Expanded Noun Phrases



---

---

---

---



---

---

---

---



---

---

---

---

Now, see if you can write some more noun phrases for something else you can see in the workshop.

---

---



# Christmas Crossword

Can you complete the crossword by completing the sentences below?





# Christmas Crossword

## Across

- The carollers sang **beautifully**. The word in bold is an \_\_\_\_\_.
- The word **Christmas** must begin with a \_\_\_\_\_ letter because it is a festival.
- Christmas is a wonder**ful** time of excitement and closene**ss** to family. The bold part of these words is called a \_\_\_\_\_.
- The tree was hung with **gorgeous**, shining baubles and sparkling tinsel. The word in bold in the sentence is an \_\_\_\_\_.

## Down

- Last year for Christmas we went to Australia. This sentence is written in the \_\_\_\_\_ tense.
- For Christmas dinner we ate roast potatoes sprouts and gravy. A \_\_\_\_\_ is missing from this sentence.
- I give my mum a lovely jumper. This sentence is written in the \_\_\_\_\_ tense.
- Santa's reindeer **gallop** through the starry sky. The word in bold in the sentence is a \_\_\_\_\_.





